

GPR38 Polyclonal Antibody

Description

Product type	Primary Antibody
Code	BT-AP03744
Host	Rabbit
Isotype	IgG
Size	20ul, 50ul, 100ul
Immunogen	Synthesized peptide derived from the C-terminal region of human GPR38.
Mol wt	45344
Species reactivity	Human
Clonality	Polyclonal
Recommended application	WB, ELISA
Concentration	1 mg/ml
Full name	GPR38 Antibody
Synonyms	MLNR; GPR38; MTLR; MTLR1; Motilin receptor; G-protein coupled receptor 38

This product is for research use only, not for use in human, therapeutic or diagnostic procedure.

Background

Motilin is a 22 amino acid peptide hormone expressed throughout the gastrointestinal (GI) tract. Motilin receptor encoded by MLNR is a motilin receptor which is a member of the G-protein coupled receptor 1 family. This member is a multi-pass transmembrane protein, and is an important therapeutic target for the treatment of hypomotility disorders.

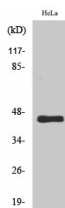
Recommended Dilution

WB: 1: 500 - 1: 2000

ELISA: 1: 20000

Not yet tested in other applications.

Images



Western Blot analysis of various cells using GPR38 Polyclonal Antibody

Storage

-20°C for one year