

GPR42 Polyclonal Antibody

Description

Product type	Primary Antibody
Code	BT-AP03749
Host	Rabbit
Isotype	IgG
Size	20ul, 50ul, 100ul
Immunogen	The antiserum was produced against synthesized peptide derived from human GPR42. AA range:12-61
Mol wt	38695
Species reactivity	Human
Clonality	Polyclonal
Recommended application	IF, ELISA
Concentration	1 mg/ml
Full name	GPR42 Antibody
Synonyms	GPR42; GPR42P; G-protein coupled receptor 42

This product is for research use only, not for use in human, therapeutic or diagnostic procedure.

Background

GPR42, also named as GPR42P, FFAR1L and GPR41L, belongs to the G-protein coupled receptor 1 family. GPR42 appears to have arisen by tandem duplication of FFAR3 and have lost the ability to activate G-protein family in response to carboxylate ligands primarily due to an amino acid change at position 174. It is an orphan receptor.

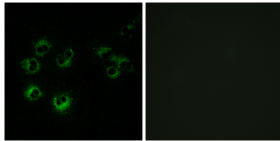
Recommended Dilution

IF: 1: 200 - 1: 1000

ELISA: 1: 20000

Not yet tested in other applications.

Images



Immunofluorescence analysis of MCF-7 cells, using GPR42 Antibody. The picture on the right is blocked with the synthesized peptide.

Storage

-20°C for one year

501 Changsheng S Rd, Nanhu Dist, Jiaxing, Zhejiang, China

Tel: 86 21 31007137 | E-mail: save@bt-laboratory.com | www.bt-laboratory.com