

GPR48 Polyclonal Antibody

Description

Product type	Primary Antibody
Code	BT-AP03752
Host	Rabbit
Isotype	IgG
Size	20ul, 50ul, 100ul
Immunogen	The antiserum was produced against synthesized peptide derived from human LGR4. AA range:461-510
Mol wt	104461
Species reactivity	Human
Clonality	Polyclonal
Recommended application	WB, IF, ELISA
Concentration	1 mg/ml
Full name	GPR48 Antibody
Synonyms	LGR4; GPR48; Leucine-rich repeat-containing G-protein coupled receptor 4; G-protein coupled receptor 48

This product is for research use only, not for use in human, therapeutic or diagnostic procedure.

Background

G protein-coupled receptors (GPCRs) play key roles in a variety of physiologic functions. Members of the leucine-rich GPCR (LGR) family, such as GPR48, have multiple N-terminal leucine-rich repeats (LRRs) and a 7-transmembrane domain.

Recommended Dilution

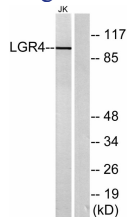
WB: 1: 500 - 1: 2000

IF: 1: 200 - 1: 1000

ELISA: 1: 5000

Not yet tested in other applications.

Images



Western blot analysis of lysates from Jurkat cells, using LGR4 Antibody. The lane on the right is blocked with the synthesized peptide.

Storage

-20°C for one year