

GPR50 Polyclonal Antibody

Description

Product type	Primary Antibody
Code	BT-AP03753
Host	Rabbit
Isotype	IgG
Size	20ul, 50ul, 100ul
Immunogen	The antiserum was produced against synthesized peptide derived from human MTR1L. AA range:301-350
Mol wt	66924
Species reactivity	Human
Clonality	Polyclonal
Recommended application	WB, IF, ELISA
Concentration	1 mg/ml
Full name	GPR50 Antibody
Synonyms	GPR50; Melatonin-related receptor; G protein-coupled receptor 50; H9

This product is for research use only, not for use in human, therapeutic or diagnostic procedure.

Background

Melatonin-related receptor belongs to the G-protein coupled receptor 1 family. Even though this protein shares similarity with the melatonin receptors, it does not bind melatonin, however, it inhibits melatonin receptor 1A function through heterodimerization. Polymorphic variants of GPR50 have been associated with bipolar affective disorder in women.

Recommended Dilution

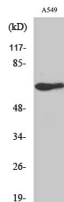
WB: 1: 500 - 1: 2000

IF: 1: 200 - 1: 1000

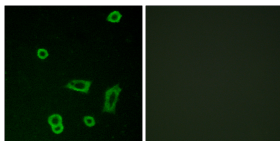
ELISA: 1: 10000

Not yet tested in other applications.

Images



Western Blot analysis of various cells using GPR50 Polyclonal Antibody diluted at 1:1000



Immunofluorescence analysis of LOVO cells, using MTR1L Antibody. The picture on the right is blocked with the synthesized peptide.

Storage

-20°C for one year