

GPR52 Polyclonal Antibody

Description

Product type	Primary Antibody
Code	BT-AP03754
Host	Rabbit
Isotype	IgG
Size	20ul, 50ul, 100ul
Immunogen	The antiserum was produced against synthesized peptide derived from human GPR52. AA range:311-360
Mol wt	41354
Species reactivity	Human
Clonality	Polyclonal
Recommended application	WB, ELISA
Concentration	1 mg/ml
Full name	GPR52 Antibody
Synonyms	GPR52; Probable G-protein coupled receptor 52

This product is for research use only, not for use in human, therapeutic or diagnostic procedure.

Background

GPR52 is a gene on chromosome 1q24 that encodes an orphan G protein-coupled receptor. Probable G-protein coupled receptor 52 is members of the G protein-coupled receptor (GPR) family play important roles in signal transduction from the external environment to the inside of the cell. Among its related pathways are Peptide ligand-binding receptors. Gene Ontology (GO) annotations related to this gene include G-protein coupled receptor activity and G-protein coupled amine receptor activity. An important paralog of this gene is GPR21.

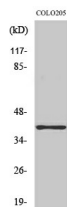
Recommended Dilution

WB: 1: 500 - 1: 2000

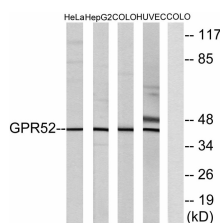
ELISA: 1: 10000

Not yet tested in other applications.

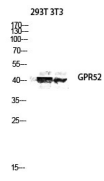
Images



Western Blot analysis of various cells using GPR52 Polyclonal Antibody diluted at 1:2000



Western blot analysis of lysates from COLO, HUVEC, HeLa, and HepG2 cells, using GPR52 Antibody. The lane on the right is blocked with the synthesized peptide.



Western blot analysis of 293T 3T3 lysis using GPR52 antibody. Antibody was diluted at 1:2000

Storage

-20°C for one year

501 Changsheng S Rd, Nanhu Dist, Jiaxing, Zhejiang, China

Tel: 86 21 31007137 | E-mail: save@bt-laboratory.com | www.bt-laboratory.com