

GPR56 Polyclonal Antibody

Description

Product type	Primary Antibody
Code	BT-AP03756
Host	Rabbit
Isotype	IgG
Size	20ul, 50ul, 100ul
Immunogen	The antiserum was produced against synthesized peptide derived from human GPR56. AA range:251-300
Mol wt	77738
Species reactivity	Human
Clonality	Polyclonal
Recommended application	WB, IF, ELISA
Concentration	1 mg/ml
Full name	GPR56 Antibody
Synonyms	GPR56; TM7LN4; TM7XN1; G-protein coupled receptor 56; Protein TM7XN1

This product is for research use only, not for use in human, therapeutic or diagnostic procedure.

Background

ADGRG1 (adhesion G protein-coupled receptor G1) encodes a member of the G protein-coupled receptor family and regulates brain cortical patterning. The encoded protein binds specifically to transglutaminase 2, a component of tissue and tumor stroma implicated as an inhibitor of tumor progression. Mutations in ADGRG1 are associated with a brain malformation known as bilateral frontoparietal polymicrogyria. Alternative splicing results in multiple transcript variants.

Recommended Dilution

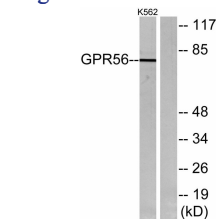
WB: 1: 500 - 1: 2000

IF: 1: 200 - 1: 1000

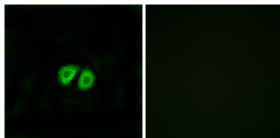
ELISA: 1: 20000

Not yet tested in other applications.

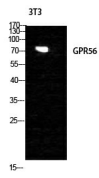
Images



Western blot analysis of lysates from K562 cells, using GPR56 Antibody. The lane on the right is blocked with the synthesized peptide.



Immunofluorescence analysis of MCF7 cells, using GPR56 Antibody. The picture on the right is blocked with the synthesized peptide.



Western Blot analysis of NIH-3T3 cells using GPR56 Polyclonal Antibody diluted at 1:1000

Storage

-20°C for one year

501 Changsheng S Rd, Nanhu Dist, Jiaxing, Zhejiang, China

Tel: 86 21 31007137 | E-mail: save@bt-laboratory.com | www.bt-laboratory.com