

## NALP4 Rabbit Polyclonal Antibody

### Description

<b>Product type</b>	Primary Antibody
<b>Code</b>	BT-AP03758
<b>Host</b>	Rabbit
<b>Isotype</b>	IgG
<b>Size</b>	100ul, 50ul, 20ul
<b>Immunogen</b>	Synthesized peptide derived from human NALP4
<b>Mol wt</b>	109340
<b>Species reactivity</b>	Human, Rat, Mouse
<b>Clonality</b>	Polyclonal
<b>Recommended application</b>	WB
<b>Concentration</b>	1 mg/ml
<b>Full name</b>	NALP4
<b>Synonyms</b>	NALP4

This product is for research use only, not for use in human, therapeutic or diagnostic procedure.

### Background

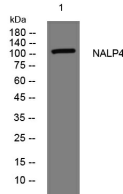
NALPs are cytoplasmic proteins that form a subfamily within the larger CATERPILLER protein family. Most short NALPs| such as NALP4| have an N-terminal pyrin (MEFV; MIM 608107) domain (PYD)| followed by a NACHT domain| a NACHT-associated domain (NAD)| and a C-terminal leucine-rich repeat (LRR) region. The long NALP| NALP1 (MIM 606636)| also has a C-terminal extension containing a function to find domain (FIIND) and a caspase recruitment domain (CARD). NALPs are implicated in the activation of proinflammatory caspases (e.g. CASP1; MIM 147678) via their involvement in multiprotein complexes called inflammasomes (Tschopp et al. 2003)

### Recommended Dilution

WB: 1: 500 - 1: 2000

Not yet tested in other applications.

### Images



Western blot analysis of lysates from KB cells, primary antibody was diluted at 1:1000, 4°C overnight

### Storage

-20°C for 1 year