

## GPR62 Polyclonal Antibody

### Description

<b>Product type</b>	Primary Antibody
<b>Code</b>	BT-AP03759
<b>Host</b>	Rabbit
<b>Isotype</b>	IgG
<b>Size</b>	20ul, 50ul, 100ul
<b>Immunogen</b>	The antiserum was produced against synthesized peptide derived from human GPR62. AA range:181-230
<b>Mol wt</b>	37629
<b>Species reactivity</b>	Human
<b>Clonality</b>	Polyclonal
<b>Recommended application</b>	WB, ELISA
<b>Concentration</b>	1 mg/ml
<b>Full name</b>	GPR62 Antibody
<b>Synonyms</b>	GPR62; Probable G-protein coupled receptor 62; G-protein coupled receptor GPCR8; hGPCR8; G-protein coupled receptor KPG_005

**This product is for research use only, not for use in human, therapeutic or diagnostic procedure.**

### Background

GPR62 is a gene on chromosome 3p21.2 that encodes Probable G-protein coupled receptor 62. G protein-coupled receptors (GPCRs, or GPRs) contain 7 transmembrane domains and transduce extracellular signals through heterotrimeric G proteins. Among its related pathways are GPCRs. Gene Ontology (GO) annotations related to this gene include G-protein coupled receptor activity. An important paralog of this gene is GPR61.

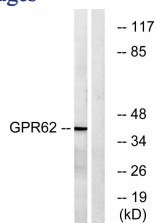
### Recommended Dilution

WB: 1: 500 - 1: 2000

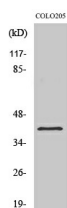
ELISA: 1: 20000

Not yet tested in other applications.

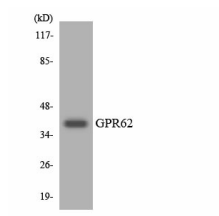
### Images



Western blot analysis of lysates from COLO cells, using GPR62 Antibody. The lane on the right is blocked with the synthesized peptide.



Western Blot analysis of various cells using GPR62 Polyclonal Antibody



Western blot analysis of the lysates from Jurkat cells using GPR62 antibody.

### Storage

-20°C for one year

501 Changsheng S Rd, Nanhu Dist, Jiaxing, Zhejiang, China

Tel: 86 21 31007137 | E-mail: [save@bt-laboratory.com](mailto:save@bt-laboratory.com) | [www.bt-laboratory.com](http://www.bt-laboratory.com)