

GPR63 Polyclonal Antibody

Description

Product type	Primary Antibody
Code	BT-AP03760
Host	Rabbit
Isotype	IgG
Size	20ul, 50ul, 100ul
Immunogen	The antiserum was produced against synthesized peptide derived from human GPR63. AA range:370-419
Mol wt	47578
Species reactivity	Human, Mouse
Clonality	Polyclonal
Recommended application	IF, ELISA
Concentration	1 mg/ml
Full name	GPR63 Antibody
Synonyms	GPR63; PSP24B; Probable G-protein coupled receptor 63; PSP24-2; PSP24-beta

This product is for research use only, not for use in human, therapeutic or diagnostic procedure.

Background

GPR63 (G protein-coupled receptor 63) encodes a G protein-coupled receptor. Multiple alternatively spliced variants, encoding the same protein, have been identified.

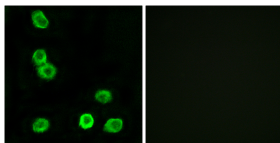
Recommended Dilution

IF: 1: 200 - 1: 1000

ELISA: 1: 20000

Not yet tested in other applications.

Images



Immunofluorescence analysis of MCF7 cells, using GPR63 Antibody. The picture on the right is blocked with the synthesized peptide.

Storage

-20°C for one year

501 Changsheng S Rd, Nanhu Dist, Jiaxing, Zhejiang, China

Tel: 86 21 31007137 | E-mail: save@bt-laboratory.com | www.bt-laboratory.com