

GPR68 Polyclonal Antibody

Description

Product type	Primary Antibody
Code	BT-AP03762
Host	Rabbit
Isotype	IgG
Size	20ul, 50ul, 100ul
Immunogen	The antiserum was produced against synthesized peptide derived from human SPR1. AA range:281-330
Mol wt	41077
Species reactivity	Human, Mouse
Clonality	Polyclonal
Recommended application	WB, IF, ELISA
Concentration	1 mg/ml
Full name	GPR68 Antibody
Synonyms	GPR68; OGR1; Ovarian cancer G-protein coupled receptor 1; OGR-1; G-protein coupled receptor 68; GPR12A; Sphingosylphosphorylcholine receptor

This product is for research use only, not for use in human, therapeutic or diagnostic procedure.

Background

GPR68 (G Protein-Coupled Receptor 68) is a Protein Coding gene. Diseases associated with GPR68 include ovarian cancer. Among its related pathways are Peptide ligand-binding receptors and Interleukin-3, 5 and GM-CSF signaling. GO annotations related to this gene include G-protein coupled receptor activity. An important paralog of this gene is GPR132.

Recommended Dilution

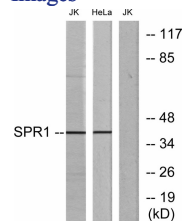
WB: 1: 500 - 1: 2000

IF: 1: 200 - 1: 1000

ELISA: 1: 5000

Not yet tested in other applications.

Images



Western blot analysis of lysates from Jurkat and HeLa cells, using SPR1 Antibody. The lane on the right is blocked with the synthesized peptide.

Storage

-20°C for one year