

GPR75 Polyclonal Antibody

Description

Product type	Primary Antibody
Code	BT-AP03763
Host	Rabbit
Isotype	IgG
Size	20ul, 50ul, 100ul
Immunogen	The antiserum was produced against synthesized peptide derived from human GPR75. AA range:381-430
Mol wt	59359
Species reactivity	Human, Mouse
Clonality	Polyclonal
Recommended application	WB, IF, ELISA
Concentration	1 mg/ml
Full name	GPR75 Antibody
Synonyms	GPR75; Probable G-protein coupled receptor 75

This product is for research use only, not for use in human, therapeutic or diagnostic procedure.

Background

GPR75 is a member of the G protein-coupled receptor family. GPRs are cell surface receptors that activate guanine-nucleotide binding proteins upon the binding of a ligand.

Recommended Dilution

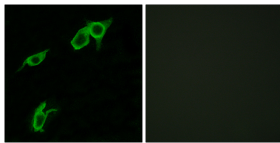
WB: 1: 500 - 1: 2000

IF: 1: 200 - 1: 1000

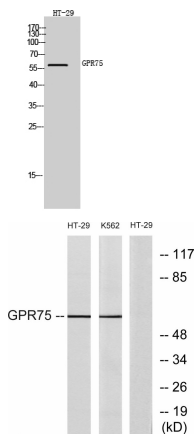
ELISA: 1: 5000

Not yet tested in other applications.

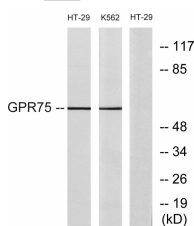
Images



Immunofluorescence analysis of LOVO cells, using GPR75 Antibody. The picture on the right is blocked with the synthesized peptide.



Western Blot analysis of HT-29 cells using GPR75 Polyclonal Antibody



Western blot analysis of lysates from HT-29 and K562 cells, using GPR75 Antibody. The lane on the right is blocked with the synthesized peptide.

Storage

-20°C for one year

501 Changsheng S Rd, Nanhu Dist, Jiaxing, Zhejiang, China

Tel: 86 21 31007137 | E-mail: save@bt-laboratory.com | www.bt-laboratory.com