

## GPR82 Polyclonal Antibody

### Description

<b>Product type</b>	Primary Antibody
<b>Code</b>	BT-AP03765
<b>Host</b>	Rabbit
<b>Isotype</b>	IgG
<b>Size</b>	20ul, 50ul, 100ul
<b>Immunogen</b>	The antiserum was produced against synthesized peptide derived from human GPR82. AA range:121-170
<b>Mol wt</b>	38409
<b>Species reactivity</b>	Human, Mouse
<b>Clonality</b>	Polyclonal
<b>Recommended application</b>	WB, ELISA
<b>Concentration</b>	1 mg/ml
<b>Full name</b>	GPR82 Antibody
<b>Synonyms</b>	GPR82; Probable G-protein coupled receptor 82

This product is for research use only, not for use in human, therapeutic or diagnostic procedure.

### Background

Probable G-protein coupled receptor 82 encoded by GPR82 is an orphan G protein-coupled receptor of unknown function. Probable G-protein coupled receptor 82 is a member of a family of proteins that contain seven transmembrane domains and transduce extracellular signals through heterotrimeric G proteins.

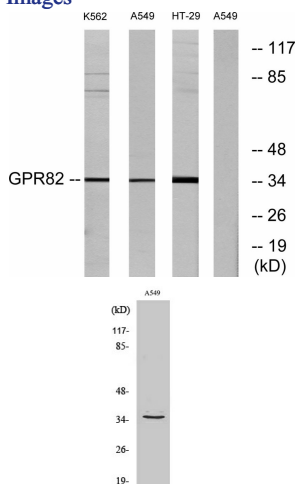
### Recommended Dilution

WB: 1: 500 - 1: 2000

ELISA: 1: 10000

Not yet tested in other applications.

### Images



Western blot analysis of lysates from A549, K562, and HT-29 cells, using GPR82 Antibody. The lane on the right is blocked with the synthesized peptide.

Western Blot analysis of various cells using GPR82 Polyclonal Antibody

## Storage

-20°C for one year

501 Changsheng S Rd, Nanhu Dist, Jiaxing, Zhejiang, China

Tel: 86 21 31007137 | E-mail: [save@bt-laboratory.com](mailto:save@bt-laboratory.com) | [www.bt-laboratory.com](http://www.bt-laboratory.com)