

GPR83 Polyclonal Antibody

Description

Product type	Primary Antibody
Code	BT-AP03766
Host	Rabbit
Isotype	IgG
Size	20ul, 50ul, 100ul
Immunogen	The antiserum was produced against synthesized peptide derived from human GPR83. AA range:361-410
Mol wt	38409
Species reactivity	Human
Clonality	Polyclonal
Recommended application	WB, ELISA
Concentration	1 mg/ml
Full name	GPR83 Antibody
Synonyms	GPR83; GPR72; KIAA1540; Probable G-protein coupled receptor 83; G-protein coupled receptor 72

This product is for research use only, not for use in human, therapeutic or diagnostic procedure.

Background

GPR83 is a gene on chromosome 11q21 that encodes Probable G-protein coupled receptor 83, possibly for neuropeptide Y. Among its related pathways are Signaling by GPCR and GPCRs. Gene Ontology (GO) annotations related to this gene include G-protein coupled receptor activity and neuropeptide Y receptor activity. An important paralog of this gene is NPY1R.

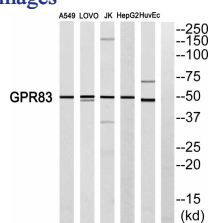
Recommended Dilution

WB: 1: 500 - 1: 2000

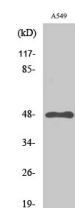
ELISA: 1: 5000

Not yet tested in other applications.

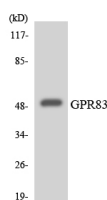
Images



Western blot analysis of GPR83 Antibody. The lane on the right is blocked with the GPR83 peptide.



Western Blot analysis of various cells using GPR83 Polyclonal Antibody



Western blot analysis of the lysates from HeLa cells using GPR83 antibody.

Storage

-20°C for one year

501 Changsheng S Rd, Nanhu Dist, Jiaxing, Zhejiang, China

Tel: 86 21 31007137 | E-mail: save@bt-laboratory.com | www.bt-laboratory.com