

## NAT8L Rabbit Polyclonal Antibody

### Description

<b>Product type</b>	Primary Antibody
<b>Code</b>	BT-AP03767
<b>Host</b>	Rabbit
<b>Isotype</b>	IgG
<b>Size</b>	100ul, 50ul, 20ul
<b>Immunogen</b>	Synthesized peptide derived from human NAT8L
<b>Mol wt</b>	33220
<b>Species reactivity</b>	Human, Mouse, Rat
<b>Clonality</b>	Polyclonal
<b>Recommended application</b>	WB
<b>Concentration</b>	1 mg/ml
<b>Full name</b>	NAT8L
<b>Synonyms</b>	NAT8L

This product is for research use only, not for use in human, therapeutic or diagnostic procedure.

### Background

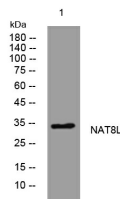
This gene encodes a single-pass membrane protein| which contains a conserved sequence of the GCN5 or NAT superfamily of N-acetyltransferases and is a member of the N-acyltransferase (NAT) superfamily. This protein is a neuron-specific protein and is the N-acetylaspartate (NAA) biosynthetic enzyme| catalyzing the NAA synthesis from L-aspartate and acetyl-CoA. NAA is a major storage and transport form of acetyl coenzyme A specific to the nervous system. The gene mutation results in primary NAA deficiency (hypoacetylaspartia).

### Recommended Dilution

WB: 1: 500 - 1: 2000

Not yet tested in other applications.

### Images



Western blot analysis of lysates from U2OS cells, primary antibody was diluted at 1:1000, 4°C overnight

### Storage

-20°C for 1 year