

GPR85 Polyclonal Antibody

Description

Product type	Primary Antibody
Code	BT-AP03768
Host	Rabbit
Isotype	IgG
Size	20ul, 50ul, 100ul
Immunogen	The antiserum was produced against synthesized peptide derived from human GPR85. AA range:181-230
Mol wt	41995
Species reactivity	Human, Mouse, Rat
Clonality	Polyclonal
Recommended application	IHC-p, IF, ELISA
Concentration	1 mg/ml
Full name	GPR85 Antibody
Synonyms	GPR85; SREB2; Probable G-protein coupled receptor 85; Super conserved receptor expressed in brain 2

This product is for research use only, not for use in human, therapeutic or diagnostic procedure.

Background

Members of the G protein-coupled receptor (GPCR) family, such as GPR85, have a similar structure characterized by 7 transmembrane domains. Activation of GPCRs by extracellular stimuli, such as neurotransmitters, hormones, or light, induces an intracellular signaling cascade mediated by heterotrimeric GTP-binding proteins, or G proteins.

Recommended Dilution

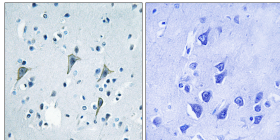
IHC: 1: 100 - 1: 300

IF: 1: 200 - 1: 1000

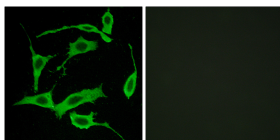
ELISA: 1: 10000

Not yet tested in other applications.

Images



Immunohistochemistry analysis of paraffin-embedded human brain tissue, using GPR85 Antibody. The picture on the right is blocked with the synthesized peptide.



Immunofluorescence analysis of LOVO cells, using GPR85 Antibody. The picture on the right is blocked with the synthesized peptide.

Storage

-20°C for one year