

GPR87 Polyclonal Antibody

Description

| | |
|-------------------------|---|
| Product type | Primary Antibody |
| Code | BT-AP03769 |
| Host | Rabbit |
| Isotype | IgG |
| Size | 20ul, 50ul, 100ul |
| Immunogen | The antiserum was produced against synthesized peptide derived from human GPR87. AA range:221-270 |
| Mol wt | 41436 |
| Species reactivity | Human, Mouse |
| Clonality | Polyclonal |
| Recommended application | WB, IF, ELISA |
| Concentration | 1 mg/ml |
| Full name | GPR87 Antibody |
| Synonyms | GPR87; GPR95; FKSG78; G-protein coupled receptor 87; G-protein coupled receptor 95 |

This product is for research use only, not for use in human, therapeutic or diagnostic procedure.

Background

GPR87 (G protein-coupled receptor 87) encodes a G protein-coupled receptor and is located in a cluster of G protein-coupled receptor genes on chromosome 3. The encoded protein has been shown to be overexpressed in lung squamous cell carcinoma (PMID: 18057535) and regulated by p53 (PMID: 19602589).

Recommended Dilution

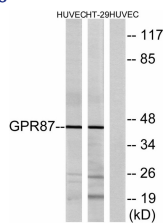
WB: 1: 500 - 1: 2000

IF: 1: 200 - 1: 1000

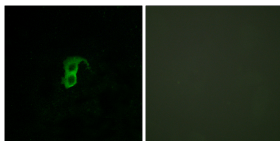
ELISA: 1: 5000

Not yet tested in other applications.

Images



Western blot analysis of lysates from HUVEC and HT-29 cells, using GPR87 Antibody. The lane on the right is blocked with the synthesized peptide.



Immunofluorescence analysis of HUVEC cells, using GPR87 Antibody. The picture on the right is blocked with the synthesized peptide.

Storage

-20°C for one year