

GPRC5C Polyclonal Antibody

Description

Product type	Primary Antibody
Code	BT-AP03777
Host	Rabbit
Isotype	IgG
Size	20ul, 50ul, 100ul
Immunogen	The antiserum was produced against synthesized peptide derived from human GPRC5C. AA range:51-100
Mol wt	48193
Species reactivity	Human, Mouse, Rat, Monkey
Clonality	Polyclonal
Recommended application	WB, IF, ELISA
Concentration	1 mg/ml
Full name	GPRC5C Antibody
Synonyms	GPRC5C; RAIG3; PSEC0087; G-protein coupled receptor family C group 5 member C; Retinoic acid-induced gene 3 protein; RAIG-3

This product is for research use only, not for use in human, therapeutic or diagnostic procedure.

Background

The protein encoded by GPRC5C (G protein-coupled receptor class C group 5 member C) is a member of the type 3 G protein-coupled receptor family. Members of this superfamily are characterized by a signature 7-transmembrane domain motif. The specific function of this protein is unknown; however, this protein may mediate the cellular effects of retinoic acid on the G protein signal transduction cascade. Two transcript variants encoding different isoforms have been found for GPRC5C.

Recommended Dilution

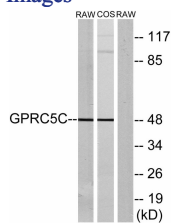
WB: 1: 500 - 1: 2000

IF: 1: 200 - 1: 1000

ELISA: 1: 5000

Not yet tested in other applications.

Images



Western blot analysis of lysates from RAW264.7 and COS7 cells, using GPRC5C Antibody. The lane on the right is blocked with the synthesized peptide.

Storage

-20°C for one year