

GPRC5D Polyclonal Antibody

Description

Product type	Primary Antibody
Code	BT-AP03778
Host	Rabbit
Isotype	IgG
Size	20ul, 50ul, 100ul
Immunogen	The antiserum was produced against synthesized peptide derived from human GPRC5D. AA range:271-320
Mol wt	38791
Species reactivity	Human, Mouse
Clonality	Polyclonal
Recommended application	WB, IF, ELISA
Concentration	1 mg/ml
Full name	GPRC5D Antibody
Synonyms	GPRC5D; G-protein coupled receptor family C group 5 member D

This product is for research use only, not for use in human, therapeutic or diagnostic procedure.

Background

The protein encoded by GPRC5D (G protein-coupled receptor class C group 5 member D) is a member of the G protein-coupled receptor family; however, the specific function of GPRC5D has not yet been determined.

Recommended Dilution

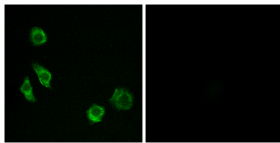
WB: 1: 500 - 1: 2000

IF: 1: 200 - 1: 1000

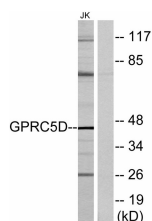
ELISA: 1: 5000

Not yet tested in other applications.

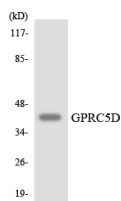
Images



Immunofluorescence analysis of MCF7 cells, using GPRC5D Antibody. The picture on the right is blocked with the synthesized peptide.



Western blot analysis of lysates from Jurkat cells, using GPRC5D Antibody. The lane on the right is blocked with the synthesized peptide.



Western blot analysis of the lysates from HUVEC cells using GPRC5D antibody.

Storage

-20°C for one year

501 Changsheng S Rd, Nanhu Dist, Jiaxing, Zhejiang, China

Tel: 86 21 31007137 | E-mail: save@bt-laboratory.com | www.bt-laboratory.com