

GPS2 Polyclonal Antibody

Description

Product type	Primary Antibody
Code	BT-AP03780
Host	Rabbit
Isotype	IgG
Size	20ul, 50ul, 100ul
Immunogen	The antiserum was produced against synthesized peptide derived from human GPS2. AA range:11-60
Mol wt	36689
Species reactivity	Human, Mouse, Rat
Clonality	Polyclonal
Recommended application	WB, ELISA
Concentration	1 mg/ml
Full name	GPS2 Antibody
Synonyms	GPS2; G protein pathway suppressor 2; GPS-2

This product is for research use only, not for use in human, therapeutic or diagnostic procedure.

Background

GPS2 encodes G protein pathway suppressor 2 involved in G protein-mitogen-activated protein kinase (MAPK) signaling cascades. When overexpressed in mammalian cells, this gene could potently suppress a RAS- and MAPK-mediated signal and interfere with JNK activity, suggesting that the function of this gene may be signal repression. The encoded protein is an integral subunit of the NCOR1-HDAC3 (nuclear receptor corepressor 1-histone deacetylase 3) complex, and it was shown that the complex inhibits JNK activation through this subunit and thus could potentially provide an alternative mechanism for hormone-mediated antagonism of AP1 (activator protein 1) function.

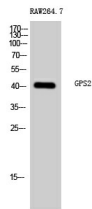
Recommended Dilution

WB: 1: 500 - 1: 2000

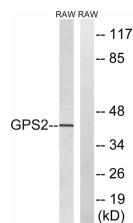
ELISA: 1: 40000

Not yet tested in other applications.

Images



Western Blot analysis of RAW264.7 cells using GPS2 Polyclonal Antibody cells nucleus.



Western blot analysis of lysates from RAW264.7 cells, using GPS2 Antibody. The lane on the right is blocked with the synthesized peptide.

Storage

-20°C for one year

501 Changsheng S Rd, Nanhu Dist, Jiaxing, Zhejiang, China

Tel: 86 21 31007137 | E-mail: save@bt-laboratory.com | www.bt-laboratory.com