

GPSN2 Polyclonal Antibody

Description

Product type	Primary Antibody
Code	BT-AP03783
Host	Rabbit
Isotype	IgG
Size	20ul, 50ul, 100ul
Immunogen	The antiserum was produced against synthesized peptide derived from human GPSN2. AA range:259-308
Mol wt	36034
Species reactivity	Human, Mouse, Rat
Clonality	Polyclonal
Recommended application	WB, IHC-p, ELISA
Concentration	1 mg/ml
Full name	GPSN2 Antibody
Synonyms	TECR; GPSN2; SC2; Trans-2; 3-enoyl-CoA reductase; TER; Synaptic glycoprotein SC2

This product is for research use only, not for use in human, therapeutic or diagnostic procedure.

Background

TECR (trans-2,3-enoyl-CoA reductase) encodes a multi-pass membrane protein that resides in the endoplasmic reticulum, and belongs to the steroid 5-alpha reductase family. The elongation of microsomal long and very long chain fatty acid consists of 4 sequential reactions. This protein catalyzes the final step, reducing trans-2,3-enoyl-CoA to saturated acyl-CoA. Alternatively spliced transcript variants have been found for TECR.

Recommended Dilution

IHC: 1: 100 - 1: 300

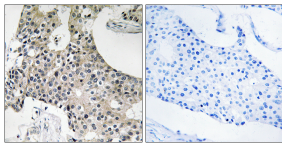
ELISA: 1: 40000

Not yet tested in other applications.

Images



Western blot analysis of 293T lysis using GPSN2 antibody. Antibody was diluted at 1:2000



Immunohistochemistry analysis of paraffin-embedded human breast carcinoma tissue, using GPSN2 Antibody. The picture on the right is blocked with the synthesized peptide.

Storage

-20°C for one year