

Granuphilin Polyclonal Antibody

Description

Product type	Primary Antibody
Code	BT-AP03792
Host	Rabbit
Isotype	IgG
Size	20ul, 50ul, 100ul
Immunogen	The antiserum was produced against synthesized peptide derived from human SYTL4. AA range:381-430
Mol wt	76010
Species reactivity	Human, Mouse, Rat
Clonality	Polyclonal
Recommended application	WB, ELISA
Concentration	1 mg/ml
Full name	Granuphilin Antibody
Synonyms	SYTL4; Synaptotagmin-like protein 4; Exophilin-2; Granuphilin

This product is for research use only, not for use in human, therapeutic or diagnostic procedure.

Background

SYTL4 (synaptotagmin like 4) encodes a member of the synaptotagmin like protein family. Members of this family are characterized by an N-terminal Rab27 binding domain and C-terminal tandem C2 domains. The encoded protein binds specific small Rab GTPases and is involved in intracellular membrane trafficking. This protein binds Rab27 and may be involved in inhibiting dense core vesicle exocytosis. Alternate splicing results in multiple transcript variants that encode the same protein.

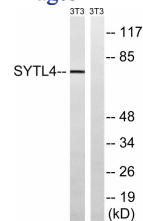
Recommended Dilution

WB: 1: 500 - 1: 2000

ELISA: 1: 40000

Not yet tested in other applications.

Images



Western blot analysis of lysates from NIH/3T3 cells, using SYTL4 Antibody. The lane on the right is blocked with the synthesized peptide.

Storage

-20°C for one year