

Granzyme A Polyclonal Antibody

Description

Product type	Primary Antibody
Code	BT-AP03793
Host	Rabbit
Isotype	IgG
Size	20ul, 50ul, 100ul
Immunogen	The antiserum was produced against synthesized peptide derived from human GRAA. AA range:61-110
Mol wt	28969
Species reactivity	Human
Clonality	Polyclonal
Recommended application	IHC-p, IF, ELISA
Concentration	1 mg/ml
Full name	Granzyme A Antibody
Synonyms	GZMA; CTLA3; HFSP; Granzyme A; CTL tryptase; Cytotoxic T-lymphocyte proteinase 1; Fragmentin-1; Granzyme-1; Hanukkah factor; H factor; HF

This product is for research use only, not for use in human, therapeutic or diagnostic procedure.

Background

Cytolytic T lymphocytes (CTL) and natural killer (NK) cells share the remarkable ability to recognize, bind, and lyse specific target cells. They are thought to protect their host by lysing cells bearing on their surface 'nonself' antigens, usually peptides or proteins resulting from infection by intracellular pathogens. The granzyme A described here is a T cell- and natural killer cell-specific serine protease that may function as a common component necessary for lysis of target cells by cytotoxic T lymphocytes and natural killer cells.

Recommended Dilution

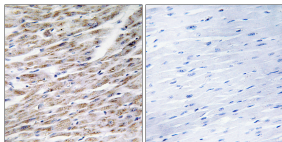
IHC: 1: 100 - 1: 300

IF: 1: 200 - 1: 1000

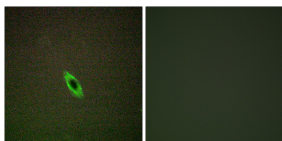
ELISA: 1: 5000

Not yet tested in other applications.

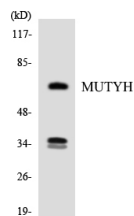
Images



Immunohistochemistry analysis of paraffin-embedded human heart tissue, using GRAA Antibody. The picture on the right is blocked with the synthesized peptide.



Immunofluorescence analysis of HepG2 cells, using GRAA Antibody. The picture on the right is blocked with the synthesized peptide.



Western blot analysis of the lysates from HUVEC cells using MUTYH antibody.

Storage

-20°C for one year

501 Changsheng S Rd, Nanhu Dist, Jiaxing, Zhejiang, China

Tel: 86 21 31007137 | E-mail: save@bt-laboratory.com | www.bt-laboratory.com