

GRB14 Polyclonal Antibody

Description

Product type	Primary Antibody
Code	BT-AP03804
Host	Rabbit
Isotype	IgG
Size	20ul, 50ul, 100ul
Immunogen	The antiserum was produced against synthesized peptide derived from human GRB14. AA range:81-130
Mol wt	60988
Species reactivity	Human, Mouse, Rat
Clonality	Polyclonal
Recommended application	WB, IHC-p, ELISA
Concentration	1 mg/ml
Full name	GRB14 Antibody
Synonyms	GRB14; Growth factor receptor-bound protein 14; GRB14 adapter protein

This product is for research use only, not for use in human, therapeutic or diagnostic procedure.

Background

Growth factor receptor-bound protein 14 belongs to a small family of adapter proteins that are known to interact with a number of receptor tyrosine kinases and signaling molecules. GRB14 encodes a growth factor receptor-binding protein that interacts with insulin receptors and insulin-like growth-factor receptors. Growth factor receptor-bound protein 14 likely has an inhibitory effect on receptor tyrosine kinase signaling and, in particular, on insulin receptor signaling. GRB14 may play a role in signaling pathways that regulate growth and metabolism. Alternative splicing results in multiple transcript variants.

Recommended Dilution

WB: 1: 500 - 1: 2000

IHC: 1: 100 - 1: 300

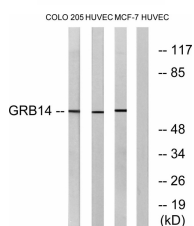
ELISA: 1: 40000

Not yet tested in other applications.

Images



Western Blot analysis of various cells using GRB14 Polyclonal Antibody



Western blot analysis of lysates from HUVEC, COLO, and MCF-7 cells, using GRB14 Antibody. The lane on the right is blocked with the synthesized peptide.

Storage

-20°C for one year

501 Changsheng S Rd, Nanhu Dist, Jiaxing, Zhejiang, China

Tel: 86 21 31007137 | E-mail: save@bt-laboratory.com | www.bt-laboratory.com