

GRK 2 Polyclonal Antibody

Description

Product type	Primary Antibody
Code	BT-AP03822
Host	Rabbit
Isotype	IgG
Size	20ul, 50ul, 100ul
Immunogen	The antiserum was produced against synthesized peptide derived from human GRK2. AA range:640-689
Mol wt	79574
Species reactivity	Human, Mouse, Rat
Clonality	Polyclonal
Recommended application	WB, IHC-p, ELISA
Concentration	1 mg/ml
Full name	GRK 2 Antibody
Synonyms	ADRBK1; BARK; BARK1; GRK2; Beta-adrenergic receptor kinase 1; Beta-ARK-1; G-protein coupled receptor kinase 2

This product is for research use only, not for use in human, therapeutic or diagnostic procedure.

Background

Beta-adrenergic receptor kinase 1 phosphorylates the beta-2-adrenergic receptor and appears to mediate agonist-specific desensitization observed at high agonist concentrations. Beta-adrenergic receptor kinase 1 is a ubiquitous cytosolic enzyme that specifically phosphorylates the activated form of the beta-adrenergic and related G-protein-coupled receptors. Abnormal coupling of beta-adrenergic receptor to G protein is involved in the pathogenesis of the failing heart.

Recommended Dilution

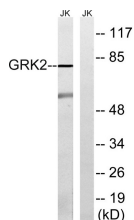
WB: 1: 500 - 1: 2000

IHC: 1: 100 - 1: 300

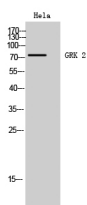
ELISA: 1: 5000

Not yet tested in other applications.

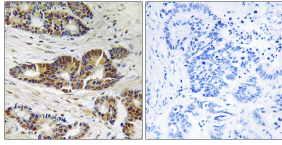
Images



Western blot analysis of lysates from Jurkat cells, using GRK2 Antibody. The lane on the right is blocked with the synthesized peptide.



Western Blot analysis of HeLa cells using GRK 2 Polyclonal Antibody diluted at 1:500



Immunohistochemistry analysis of paraffin-embedded human colon carcinoma tissue, using GRK2 Antibody. The picture on the right is blocked with the synthesized peptide.

Storage

-20°C for one year

501 Changsheng S Rd, Nanhu Dist, Jiaxing, Zhejiang, China

Tel: 86 21 31007137 | E-mail: save@bt-laboratory.com | www.bt-laboratory.com