

GRK 5 Polyclonal Antibody

Description

Product type	Primary Antibody
Code	BT-AP03827
Host	Rabbit
Isotype	IgG
Size	20ul, 50ul, 100ul
Immunogen	The antiserum was produced against synthesized peptide derived from human GRK5. AA range:351-400
Mol wt	67787
Species reactivity	Human, Mouse, Rat
Clonality	Polyclonal
Recommended application	WB, IHC-p, ELISA
Concentration	1 mg/ml
Full name	GRK 5 Antibody
Synonyms	GRK5; GPRK5; G protein-coupled receptor kinase 5; G protein-coupled receptor kinase GRK5

This product is for research use only, not for use in human, therapeutic or diagnostic procedure.

Background

GRK5 encodes a member of the guanine nucleotide-binding protein (G protein)-coupled receptor kinase subfamily of the Ser/Thr protein kinase family. G protein-coupled receptor kinase 5 phosphorylates the activated forms of G protein-coupled receptors thus initiating their deactivation. It has also been shown to play a role in regulating the motility of polymorphonuclear leukocytes (PMNs).

Recommended Dilution

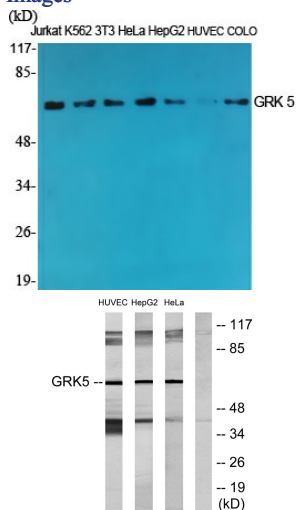
WB: 1: 500 - 1: 2000

IHC: 1: 100 - 1: 300

ELISA: 1: 10000

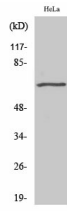
Not yet tested in other applications.

Images



Western Blot analysis of various cells using GRK 5 Polyclonal Antibody

Western blot analysis of lysates from HeLa, HepG2, and HUVEC cells, using GRK5 Antibody. The lane on the right is blocked with the synthesized peptide.



Western Blot analysis of COLO205 cells using GRK 5 Polyclonal Antibody

Storage

-20°C for one year

501 Changsheng S Rd, Nanhu Dist, Jiaxing, Zhejiang, China

Tel: 86 21 31007137 | E-mail: save@bt-laboratory.com | www.bt-laboratory.com