

GRK 6 Polyclonal Antibody

Description

Product type	Primary Antibody
Code	BT-AP03828
Host	Rabbit
Isotype	IgG
Size	20ul, 50ul, 100ul
Immunogen	The antiserum was produced against synthesized peptide derived from human GRK6. AA range:10-59
Mol wt	65991
Species reactivity	Human, Mouse, Rat
Clonality	Polyclonal
Recommended application	WB, IF, ELISA
Concentration	1 mg/ml
Full name	GRK 6 Antibody
Synonyms	GRK6; GPRK6; G protein-coupled receptor kinase 6; G protein-coupled receptor kinase GRK6

This product is for research use only, not for use in human, therapeutic or diagnostic procedure.

Background

GRK6 encodes a member of the guanine nucleotide-binding protein (G protein)-coupled receptor kinase subfamily of the Ser/Thr protein kinase family. The G protein-coupled receptor kinase 6 phosphorylates the activated forms of G protein-coupled receptors thus initiating their deactivation. Several transcript variants encoding different isoforms have been described for GRK6.

Recommended Dilution

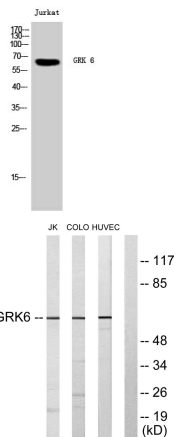
WB: 1: 500 - 1: 2000

IF: 1: 200 - 1: 1000

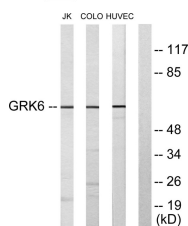
ELISA: 1: 10000

Not yet tested in other applications.

Images

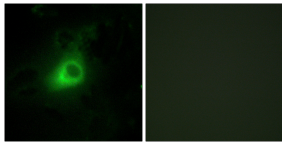


Western Blot analysis of Jurkat cells using GRK 6 Polyclonal Antibody



Western blot analysis of lysates from Jurkat, COLO205, and HUVEC cells, using GRK6 Antibody.

The lane on the right is blocked with the synthesized peptide.



Immunofluorescence analysis of HeLa cells, using GRK6 Antibody. The picture on the right is blocked with the synthesized peptide.

Storage

-20°C for one year

501 Changsheng S Rd, Nanhu Dist, Jiaxing, Zhejiang, China

Tel: 86 21 31007137 | E-mail: save@bt-laboratory.com | www.bt-laboratory.com