

GRK 7 Polyclonal Antibody

Description

Product type	Primary Antibody
Code	BT-AP03829
Host	Rabbit
Isotype	IgG
Size	20ul, 50ul, 100ul
Immunogen	The antiserum was produced against synthesized peptide derived from human GRK7. AA range:371-420
Mol wt	62212
Species reactivity	Human
Clonality	Polyclonal
Recommended application	WB, IF, ELISA
Concentration	1 mg/ml
Full name	GRK 7 Antibody
Synonyms	GRK7; GPRK7; G protein-coupled receptor kinase 7; G protein-coupled receptor kinase GRK7

This product is for research use only, not for use in human, therapeutic or diagnostic procedure.

Background

GRK7 encodes a member of the guanine nucleotide-binding protein (G protein)-coupled receptor kinase subfamily of the Ser/Thr protein kinase family. It is specifically expressed in the retina and G protein-coupled receptor kinase 7 has been shown to phosphorylate cone opsins and initiate their deactivation.

Recommended Dilution

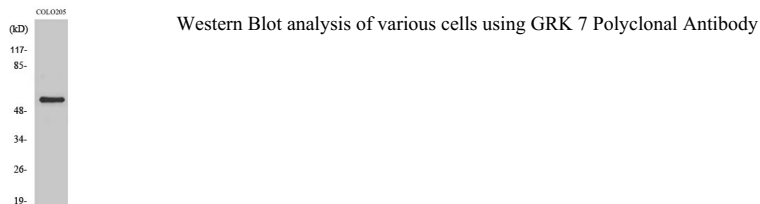
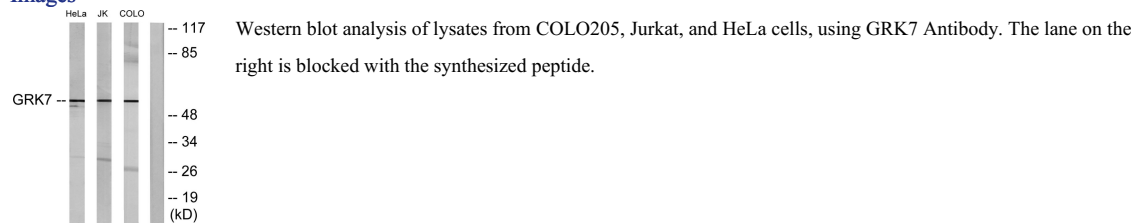
WB: 1: 500 - 1: 2000

IF: 1: 200 - 1: 1000

ELISA: 1: 20000

Not yet tested in other applications.

Images



Storage

-20°C for one year

501 Changsheng S Rd, Nanhu Dist, Jiaxing, Zhejiang, China

Tel: 86 21 31007137 | E-mail: save@bt-laboratory.com | www.bt-laboratory.com