

NLTP Rabbit Polyclonal Antibody

Description

Product type	Primary Antibody
Code	BT-AP03830
Host	Rabbit
Isotype	IgG
Size	100ul, 50ul, 20ul
Immunogen	Synthesized peptide derived from human NLTP
Mol wt	60170
Species reactivity	Human, Mouse, Rat
Clonality	Polyclonal
Recommended application	WB
Concentration	1 mg/ml
Full name	NLTP
Synonyms	NLTP

This product is for research use only, not for use in human, therapeutic or diagnostic procedure.

Background

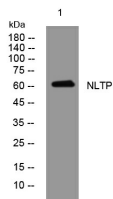
This gene encodes two proteins: sterol carrier protein X (SCPx) and sterol carrier protein 2 (SCP2) as a result of transcription initiation from 2 independently regulated promoters. The transcript initiated from the proximal promoter encodes the longer SCPx protein and the transcript initiated from the distal promoter encodes the shorter SCP2 protein with the 2 proteins sharing a common C-terminus. Evidence suggests that the SCPx protein is a peroxisome-associated thiolase that is involved in the oxidation of branched chain fatty acids while the SCP2 protein is thought to be an intracellular lipid transfer protein. This gene is highly expressed in organs involved in lipid metabolism and may play a role in Zellweger syndrome in which cells are deficient in peroxisomes and have impaired bile acid synthesis. Alternative splicing of this gene produces multiple transcript variants some encoding different isoforms.

Recommended Dilution

WB: 1: 500 - 1: 2000

Not yet tested in other applications.

Images



Western blot analysis of lysates from HuvEc cells, primary antibody was diluted at 1:1000, 4°C overnight

Storage

-20°C for 1 year