

GS28 Polyclonal Antibody

Description

Product type	Primary Antibody
Code	BT-AP03841
Host	Rabbit
Isotype	IgG
Size	20ul, 50ul, 100ul
Immunogen	The antiserum was produced against synthesized peptide derived from human GOSR1. AA range:11-60
Mol wt	28613
Species reactivity	Human
Clonality	Polyclonal
Recommended application	WB, ELISA
Concentration	1 mg/ml
Full name	GS28 Antibody
Synonyms	GOSR1; GS28; Golgi SNAP receptor complex member 1; 28 kDa Golgi SNARE protein; 28 kDa cis-Golgi SNARE p28; GOS-28

This product is for research use only, not for use in human, therapeutic or diagnostic procedure.

Background

GOSR1 (golgi SNAP receptor complex member 1) encodes a trafficking membrane protein which transports proteins among the endoplasmic reticulum and the Golgi and between Golgi compartments. This protein is considered an essential component of the Golgi SNAP receptor (SNARE) complex. Alternatively spliced transcript variants encoding distinct isoforms have been found for GOSR1.

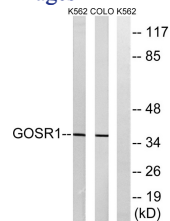
Recommended Dilution

WB: 1: 500 - 1: 2000

ELISA: 1: 10000

Not yet tested in other applications.

Images



Western blot analysis of lysates from COLO and K562 cells, using GOSR1 Antibody. The lane on the right is blocked with the synthesized peptide.

Storage

-20°C for one year