

GSC2 Polyclonal Antibody

Description

Product type	Primary Antibody
Code	BT-AP03844
Host	Rabbit
Isotype	IgG
Size	20ul, 50ul, 100ul
Immunogen	The antiserum was produced against synthesized peptide derived from human GSC2. AA range:131-180
Mol wt	21545
Species reactivity	Human, Mouse
Clonality	Polyclonal
Recommended application	WB, ELISA
Concentration	1 mg/ml
Full name	GSC2 Antibody
Synonyms	GSC2; GSCL; Homeobox protein goosecoid-2; GSC-2; Homeobox protein goosecoid-like; GSC-L

This product is for research use only, not for use in human, therapeutic or diagnostic procedure.

Background

Goosecoidlike (GSCL), a homeodomain-containing gene, resides in the critical region for VCFS/DGS on 22q11. Velocardiofacial syndrome (VCFS) is a developmental disorder characterized by conotruncal heart defects, craniofacial anomalies, and learning disabilities. VCFS is phenotypically related to DiGeorge syndrome (DGS) and both syndromes are associated with hemizygous 22q11 deletions. Because many of the tissues and structures affected in VCFS/DGS derive from the pharyngeal arches of the developing embryo, it is believed that haploinsufficiency of a gene involved in embryonic development may be responsible for its etiology. GSC2 is expressed in a limited number of adult tissues, as well as in early human development.

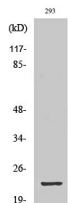
Recommended Dilution

WB: 1: 500 - 1: 2000

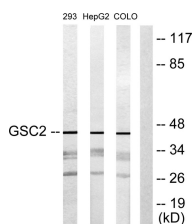
ELISA: 1: 20000

Not yet tested in other applications.

Images



Western Blot analysis of various cells using GSC2 Polyclonal Antibody diluted at 1:1000 cells nucleus.



Western blot analysis of lysates from 293, HepG2, and COLO205 cells, using GSC2 Antibody. The lane on the right is blocked with the synthesized peptide.

Storage

-20°C for one year

501 Changsheng S Rd, Nanhu Dist, Jiaxing, Zhejiang, China

Tel: 86 21 31007137 | E-mail: save@bt-laboratory.com | www.bt-laboratory.com