

GSK3 Alpha Polyclonal Antibody

Description

Product type	Primary Antibody
Code	BT-AP03846
Host	Rabbit
Isotype	IgG
Size	20ul, 50ul, 100ul
Immunogen	The antiserum was produced against synthesized peptide derived from human GSK3A. AA range:10-59
Mol wt	50981
Species reactivity	Human, Mouse, Rat
Clonality	Polyclonal
Recommended application	WB, IHC-p, IP, ELISA
Concentration	1 mg/ml
Full name	GSK3alpha Antibody
Synonyms	GSK3A; Glycogen synthase kinase-3 alpha; GSK-3 alpha; Serine/threonine-protein kinase GSK3A

This product is for research use only, not for use in human, therapeutic or diagnostic procedure.

Background

GSK3A encodes a multifunctional Ser/Thr protein kinase that is implicated in the control of several regulatory proteins including glycogen synthase, and transcription factors, such as JUN. Glycogen synthase kinase-3 alpha also plays a role in the WNT and PI3K signaling pathways, as well as regulates the production of beta-amyloid peptides associated with Alzheimer's disease.

Recommended Dilution

WB: 1: 500 - 1: 2000

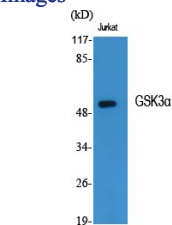
IHC: 1: 100 - 1: 300

ELISA: 1: 20000

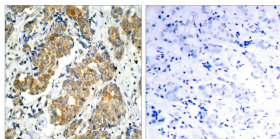
IP: 2 - 5 ug: mg lysate

Not yet tested in other applications.

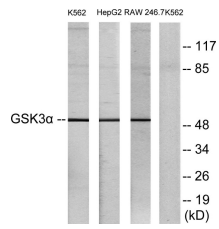
Images



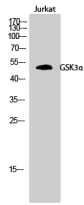
Western Blot analysis of various cells using GSK3 α Polyclonal Antibody



Immunohistochemistry analysis of paraffin-embedded human breast carcinoma, using GSK3 alpha Antibody. The picture on the right is blocked with the synthesized peptide.



Western blot analysis of lysates from K562, HepG2, and RAW264.7 cells, using GSK3 alpha Antibody. The lane on the right is blocked with the synthesized peptide.



Western Blot analysis of Jurkat cells using GSK3α Polyclonal Antibody

Storage

-20°C for one year

501 Changsheng S Rd, Nanhu Dist, Jiaxing, Zhejiang, China

Tel: 86 21 31007137 | E-mail: save@bt-laboratory.com | www.bt-laboratory.com