

GSK3 Alpha/Beta Polyclonal Antibody

Description

Product type	Primary Antibody
Code	BT-AP03847
Host	Rabbit
Isotype	IgG
Size	20ul, 50ul, 100ul
Immunogen	The antiserum was produced against synthesized peptide derived from human GSK3 alpha/beta. AA range:246-295
Mol wt	50981
Species reactivity	Human, Mouse, Rat
Clonality	Polyclonal
Recommended application	WB, IHC-p, ELISA
Concentration	1 mg/ml
Full name	GSK3alpha/beta Antibody
Synonyms	GSK3A; Glycogen synthase kinase-3 alpha; GSK-3 alpha; Serine/threonine-protein kinase GSK3A; GSK3B; Glycogen synthase kinase-3 beta; GSK-3 beta; Serine/threonine-protein kinase GSK3B

This product is for research use only, not for use in human, therapeutic or diagnostic procedure.

Background

GSK3A encodes a multifunctional Ser/Thr protein kinase that is implicated in the control of several regulatory proteins including glycogen synthase, and transcription factors, such as JUN. Glycogen synthase kinase-3 alpha also plays a role in the WNT and PI3K signaling pathways, as well as regulates the production of beta-amyloid peptides associated with Alzheimer's disease.

Recommended Dilution

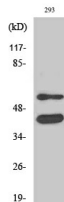
WB: 1: 500 - 1: 2000

IHC: 1: 100 - 1: 300

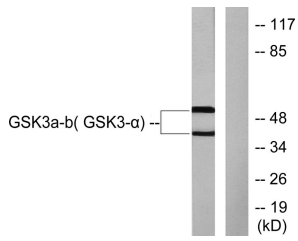
ELISA: 1: 20000

Not yet tested in other applications.

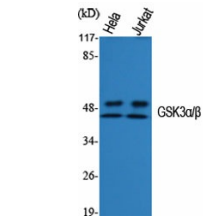
Images



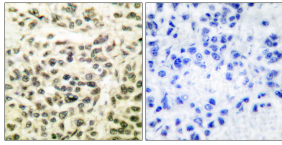
Western Blot analysis of 293 cells using GSK3 α / β Polyclonal Antibody diluted at 1:1000



Western blot analysis of lysates from 293 cells, treated with TNF-a 20ng/ml 30', using GSK3 alpha/beta Antibody. The lane on the right is blocked with the synthesized peptide.



Western Blot analysis of various cells using GSK3 α/β Polyclonal Antibody diluted at 1:1000



Immunohistochemistry analysis of paraffin-embedded human breast carcinoma tissue, using GSK3 alpha/beta Antibody. The picture on the right is blocked with the synthesized peptide.

Storage

-20°C for one year

501 Changsheng S Rd, Nanhu Dist, Jiaxing, Zhejiang, China

Tel: 86 21 31007137 | E-mail: save@bt-laboratory.com | www.bt-laboratory.com