

NPHP3 Rabbit Polyclonal Antibody

Description

Product type	Primary Antibody
Code	BT-AP03852
Host	Rabbit
Isotype	IgG
Size	100ul, 50ul, 20ul
Immunogen	Synthesized peptide derived from human NPHP3
Mol wt	146300
Species reactivity	Human, Mouse
Clonality	Polyclonal
Recommended application	WB
Concentration	1 mg/ml
Full name	NPHP3
Synonyms	NPHP3

This product is for research use only, not for use in human, therapeutic or diagnostic procedure.

Background

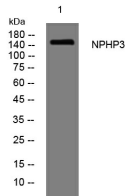
This gene encodes a protein containing a coiled-coil (CC) domain| a tubulin-tyrosine ligase (TTL) domain| and a tetratricopeptide repeat (TPR) domain. The encoded protein interacts with nephrocystin| it is required for normal ciliary development| and it functions in renal tubular development. Mutations in this gene are associated with nephronophthisis type 3| and also with renal-hepatic-pancreatic dysplasia| and Meckel syndrome type 7. Naturally occurring read-through transcripts exist between this gene and the downstream ACAD11 (acyl-CoA dehydrogenase family| member 11) gene.

Recommended Dilution

WB: 1: 500 - 1: 2000

Not yet tested in other applications.

Images



Western blot analysis of lysates from HeLa cells, primary antibody was diluted at 1:1000, 4°C overnight

Storage

-20°C for 1 year