

GTPBP2 Polyclonal Antibody

Description

Product type	Primary Antibody
Code	BT-AP03857
Host	Rabbit
Isotype	IgG
Size	20ul, 50ul, 100ul
Immunogen	The antiserum was produced against synthesized peptide derived from human GTPBP2. AA range:31-80
Mol wt	65768
Species reactivity	Human, Mouse
Clonality	Polyclonal
Recommended application	IHC-p, ELISA
Concentration	1 mg/ml
Full name	GTPBP2 Antibody
Synonyms	GTPBP2; GTP-binding protein 2

This product is for research use only, not for use in human, therapeutic or diagnostic procedure.

Background

GTP-binding proteins, or G proteins, constitute a superfamily capable of binding GTP or GDP. G proteins are activated by binding GTP and are inactivated by hydrolyzing GTP to GDP. This general mechanism enables G proteins to perform a wide range of biologic activities.

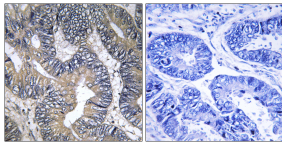
Recommended Dilution

IHC: 1: 100 - 1: 300

ELISA: 1: 40000

Not yet tested in other applications.

Images



Immunohistochemistry analysis of paraffin-embedded human colon carcinoma tissue, using GTPBP2 Antibody. The picture on the right is blocked with the synthesized peptide.

Storage

-20°C for one year

501 Changsheng S Rd, Nanhu Dist, Jiaxing, Zhejiang, China

Tel: 86 21 31007137 | E-mail: save@bt-laboratory.com | www.bt-laboratory.com