

GTPBP5 Polyclonal Antibody

Description

Product type	Primary Antibody
Code	BT-AP03858
Host	Rabbit
Isotype	IgG
Size	20ul, 50ul, 100ul
Immunogen	The antiserum was produced against synthesized peptide derived from human GTPBP5. AA range:71-120
Mol wt	43955
Species reactivity	Human, Mouse, Rat
Clonality	Polyclonal
Recommended application	IHC-p, ELISA
Concentration	1 mg/ml
Full name	GTPBP5 Antibody
Synonyms	GTPBP5; OBGH1; GTP-binding protein 5; Protein obg homolog 1; ObgH1

This product is for research use only, not for use in human, therapeutic or diagnostic procedure.

Background

Small G proteins, such as GTPBP5, act as molecular switches that play crucial roles in the regulation of fundamental cellular processes such as protein synthesis, nuclear transport, membrane trafficking, and signal transduction (Hirano et al. 2006 [PubMed 17054726]).

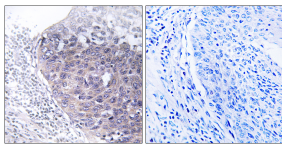
Recommended Dilution

IHC: 1: 100 - 1: 300

ELISA: 1: 20000

Not yet tested in other applications.

Images



Immunohistochemistry analysis of paraffin-embedded human cervix carcinoma tissue, using GTPBP5 Antibody. The picture on the right is blocked with the synthesized peptide.

Storage

-20°C for one year

501 Changsheng S Rd, Nanhu Dist, Jiaxing, Zhejiang, China

Tel: 86 21 31007137 | E-mail: save@bt-laboratory.com | www.bt-laboratory.com