

NSD3 Rabbit Polyclonal Antibody

Description

Product type	Primary Antibody
Code	BT-AP03862
Host	Rabbit
Isotype	IgG
Size	100ul, 50ul, 20ul
Immunogen	Synthesized peptide derived from human NSD3
Mol wt	158070
Species reactivity	Human, Mouse
Clonality	Polyclonal
Recommended application	WB
Concentration	1 mg/ml
Full name	NSD3
Synonyms	NSD3

This product is for research use only, not for use in human, therapeutic or diagnostic procedure.

Background

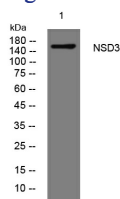
This gene is related to the Wolf-Hirschhorn syndrome candidate-1 gene and encodes a protein with PWWP (proline-tryptophan-tryptophan-proline) domains. This protein methylates histone H3 at lysine residues 4 and 27 which represses gene transcription. Two alternatively spliced variants have been described.

Recommended Dilution

WB: 1: 500 - 1: 2000

Not yet tested in other applications.

Images



Western blot analysis of lysates from 293T cells, primary antibody was diluted at 1:1000, 4°C overnight

Storage

-20°C for 1 year