

GUF1 Polyclonal Antibody

Description

Product type	Primary Antibody
Code	BT-AP03863
Host	Rabbit
Isotype	IgG
Size	20ul, 50ul, 100ul
Immunogen	The antiserum was produced against synthesized peptide derived from human GUF1. AA range:421-470
Mol wt	74328
Species reactivity	Human
Clonality	Polyclonal
Recommended application	IHC-p, ELISA
Concentration	1 mg/ml
Full name	GUF1 Antibody
Synonyms	GUF1; Translation factor GUF1; mitochondrial; Elongation factor 4 homolog; EF-4; GTPase GUF1; Ribosomal back-translocase

This product is for research use only, not for use in human, therapeutic or diagnostic procedure.

Background

GUF1 (GUF1 GTPase), also known as EF-4 (elongation factor 4 homolog), is a 669 amino acid protein belonging to the GTP-binding elongation factor family and the LepA subfamily. Localizing to the mitochondrion inner membrane, GUF1 promotes mitochondrial protein synthesis and binds to mitochondrial ribosomes in a GTP-dependent manner. GUF1 may act as a fidelity factor of the translation reaction, by catalyzing a one-codon backward translocation of tRNAs on improperly translocated ribosomes. In western blotting, we got double bands 74 kDa and 70 kDa, due to the N-terminal 1-49 amino acid sequence that could be cut down.

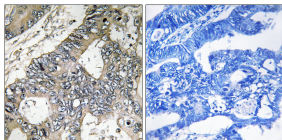
Recommended Dilution

IHC: 1: 100 - 1: 300

ELISA: 1: 20000

Not yet tested in other applications.

Images



Immunohistochemistry analysis of paraffin-embedded human colon carcinoma tissue, using GUF1 Antibody. The picture on the right is blocked with the synthesized peptide.

Storage

-20°C for one year