

GUSBP1 Polyclonal Antibody

Description

Product type	Primary Antibody
Code	BT-AP03864
Host	Rabbit
Isotype	IgG
Size	20ul, 50ul, 100ul
Immunogen	The antiserum was produced against synthesized peptide derived from human GUSBL1. AA range:51-100
Mol wt	15472
Species reactivity	Human
Clonality	Polyclonal
Recommended application	WB, ELISA
Concentration	1 mg/ml
Full name	GUSBP1 Antibody
Synonyms	GUSBP1; SMA3; Putative beta-glucuronidase-like protein SMA3

This product is for research use only, not for use in human, therapeutic or diagnostic procedure.

Background

Binds GTP, GDP and GMP.

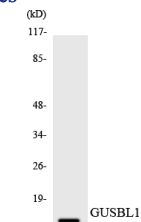
Recommended Dilution

WB: 1: 500 - 1: 2000

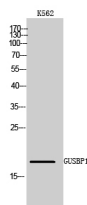
ELISA: 1: 40000

Not yet tested in other applications.

Images



Western blot analysis of the lysates from HT-29 cells using GUSBL1 antibody.



Western Blot analysis of K562 cells using GUSBP1 Polyclonal Antibody

Storage

-20°C for one year