

## Gz- Alpha Polyclonal Antibody

### Description

<b>Product type</b>	Primary Antibody
<b>Code</b>	BT-AP03865
<b>Host</b>	Rabbit
<b>Isotype</b>	IgG
<b>Size</b>	20ul, 50ul, 100ul
<b>Immunogen</b>	The antiserum was produced against synthesized peptide derived from human Gz-alpha. AA range:1-50
<b>Mol wt</b>	40924
<b>Species reactivity</b>	Human, Mouse, Rat, Monkey
<b>Clonality</b>	Polyclonal
<b>Recommended application</b>	WB, IHC-p, ELISA
<b>Concentration</b>	1 mg/ml
<b>Full name</b>	Gz-alpha Antibody
<b>Synonyms</b>	GNAZ; Guanine nucleotide-binding protein G(z) subunit alpha; G(x) alpha chain; Gz-alpha

**This product is for research use only, not for use in human, therapeutic or diagnostic procedure.**

### Background

Guanine nucleotide-binding protein G(z) subunit alpha encoded by GNAZ is a member of a G protein subfamily that mediates signal transduction in pertussis toxin-insensitive systems. Guanine nucleotide-binding protein G(z) subunit alpha may play a role in maintaining the ionic balance of perilymphatic and endolymphatic cochlear fluids.

### Recommended Dilution

WB: 1: 500 - 1: 2000

IHC: 1: 100 - 1: 300

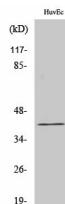
ELISA: 1: 40000

Not yet tested in other applications.

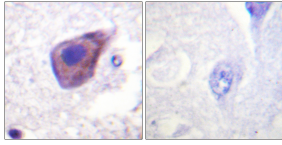
### Images



Western blot analysis of lysates from COS7 cells, treated with PMA 125ng/ml 30', using Gz-alpha Antibody. The lane on the right is blocked with the synthesized peptide.



Western Blot analysis of various cells using Gz-α Polyclonal Antibody



Immunohistochemistry analysis of paraffin-embedded human brain tissue, using Gz-alpha Antibody.  
The picture on the right is blocked with the synthesized peptide.

### Storage

-20°C for one year

501 Changsheng S Rd, Nanhu Dist, Jiaxing, Zhejiang, China

Tel: 86 21 31007137 | E-mail: [save@bt-laboratory.com](mailto:save@bt-laboratory.com) | [www.bt-laboratory.com](http://www.bt-laboratory.com)