

G Alpha t1 Polyclonal Antibody

Description

Product type	Primary Antibody
Code	BT-AP03869
Host	Rabbit
Isotype	IgG
Size	20ul, 50ul, 100ul
Immunogen	The antiserum was produced against synthesized peptide derived from human GNAT1. AA range:71-120
Mol wt	40041
Species reactivity	Human, Mouse, Rat
Clonality	Polyclonal
Recommended application	WB, ELISA
Concentration	1 mg/ml
Full name	Galpha t1 Antibody
Synonyms	GNAT1; GNATR; Guanine nucleotide-binding protein G(t) subunit alpha-1; Transducin alpha-1 chain

This product is for research use only, not for use in human, therapeutic or diagnostic procedure.

Background

Transducin is a 3-subunit guanine nucleotide-binding protein (G protein) which stimulates the coupling of rhodopsin and cGMP-phosphodiesterase during visual impulses. The transducin alpha subunits in rods and cones are encoded by separate genes. GNAT1 encodes guanine nucleotide-binding protein G(t) subunit alpha-1 in rods. GNAT1 is also expressed in other cells, and has been implicated in bitter taste transduction in rat taste cells. Mutations in this gene result in autosomal dominant congenital stationary night blindness. Multiple alternatively spliced variants, encoding the same protein, have been identified.

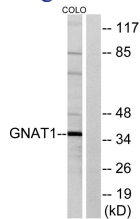
Recommended Dilution

WB: 1: 500 - 1: 2000

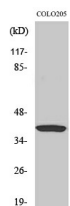
ELISA: 1: 40000

Not yet tested in other applications.

Images



Western blot analysis of lysates from COLO cells, using GNAT1 Antibody. The lane on the right is blocked with the synthesized peptide.



Western Blot analysis of various cells using Ga t1 Polyclonal Antibody diluted at 1:2000

Storage

-20°C for one year

501 Changsheng S Rd, Nanhu Dist, Jiaxing, Zhejiang, China

Tel: 86 21 31007137 | E-mail: save@bt-laboratory.com | www.bt-laboratory.com