

G Alpha t2 Polyclonal Antibody

Description

Product type	Primary Antibody
Code	BT-AP03870
Host	Rabbit
Isotype	IgG
Size	20ul, 50ul, 100ul
Immunogen	The antiserum was produced against synthesized peptide derived from human GNAT2. AA range:1-50
Mol wt	40176
Species reactivity	Human, Mouse
Clonality	Polyclonal
Recommended application	WB, IHC-p, ELISA
Concentration	1 mg/ml
Full name	Galpha t2 Antibody
Synonyms	GNAT2; GNATC; Guanine nucleotide-binding protein G(t) subunit alpha-2; Transducin alpha-2 chain

This product is for research use only, not for use in human, therapeutic or diagnostic procedure.

Background

Transducin is a 3-subunit guanine nucleotide-binding protein (G protein) which stimulates the coupling of rhodopsin and cGMP-phosphodiesterase during visual impulses. The transducin alpha subunits in rods and cones are encoded by separate genes. GNAT2 encodes the alpha subunit in cones.

Recommended Dilution

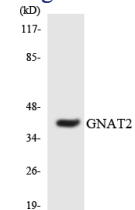
WB: 1: 500 - 1: 2000

IHC: 1: 100 - 1: 300

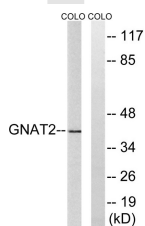
ELISA: 1: 10000

Not yet tested in other applications.

Images



Western blot analysis of the lysates from Jurkat cells using GNAT2 antibody.



Western blot analysis of lysates from COLO cells, using GNAT2 Antibody. The lane on the right is blocked with the synthesized peptide.

Storage

-20°C for one year

501 Changsheng S Rd, Nanhu Dist, Jiaxing, Zhejiang, China

Tel: 86 21 31007137 | E-mail: save@bt-laboratory.com | www.bt-laboratory.com