

GBeta 5 Polyclonal Antibody

Description

Product type	Primary Antibody
Code	BT-AP03871
Host	Rabbit
Isotype	IgG
Size	20ul, 50ul, 100ul
Immunogen	The antiserum was produced against synthesized peptide derived from human GNB5. AA range:151-200
Mol wt	43566
Species reactivity	Human, Mouse, Rat
Clonality	Polyclonal
Recommended application	WB, IHC-p, ELISA
Concentration	1 mg/ml
Full name	Gbeta 5 Antibody
Synonyms	GNB5; Guanine nucleotide-binding protein subunit beta-5; Gbeta5; Transducin beta chain 5

This product is for research use only, not for use in human, therapeutic or diagnostic procedure.

Background

Heterotrimeric guanine nucleotide-binding proteins (G proteins), which integrate signals between receptors and effector proteins, are composed of an alpha, a beta, and a gamma subunit. These subunits are encoded by families of related genes. GNB5 encodes a beta subunit. Beta subunits are important regulators of alpha subunits, as well as of certain signal transduction receptors and effectors. Alternatively spliced transcript variants encoding different isoforms exist.

Recommended Dilution

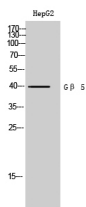
WB: 1: 500 - 1: 2000

IHC: 1: 100 - 1: 300

ELISA: 1: 40000

Not yet tested in other applications.

Images



Western Blot analysis of HepG2 cells using Gβ 5 Polyclonal Antibody cells nucleus.

Storage

-20°C for one year