

GGamma 5 Polyclonal Antibody

Description

Product type	Primary Antibody
Code	BT-AP03872
Host	Rabbit
Isotype	IgG
Size	20ul, 50ul, 100ul
Immunogen	The antiserum was produced against synthesized peptide derived from human GNG5. AA range:10-59
Mol wt	7318
Species reactivity	Human, Mouse, Rat
Clonality	Polyclonal
Recommended application	IF, ELISA
Concentration	1 mg/ml
Full name	Ggamma 5 Antibody
Synonyms	GNG5; GNGT5; Guanine nucleotide-binding protein G(I)/G(S)/G(O) subunit gamma-5

This product is for research use only, not for use in human, therapeutic or diagnostic procedure.

Background

G proteins are trimeric (alpha-beta-gamma) membrane-associated proteins that regulate flow of information from cell surface receptors to a variety of internal metabolic effectors. Interaction of a G protein with its activated receptor promotes exchange of GTP for GDP that is bound to the alpha subunit. The alpha-GTP complex dissociates from the beta-gamma heterodimer so that the subunits, in turn, may interact with and regulate effector molecules (Gilman, 1987 [PubMed 3113327]; summary by Ahmad et al. 1995 [PubMed 7606925]).

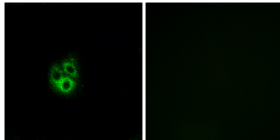
Recommended Dilution

IF: 1: 200 - 1: 1000

ELISA: 1: 20000

Not yet tested in other applications.

Images



Immunofluorescence analysis of A549 cells, using GNG5 Antibody. The picture on the right is blocked with the synthesized peptide.

Storage

-20°C for one year

501 Changsheng S Rd, Nanhu Dist, Jiaxing, Zhejiang, China

Tel: 86 21 31007137 | E-mail: save@bt-laboratory.com | www.bt-laboratory.com