

Hamartin Polyclonal Antibody

Description

Product type	Primary Antibody
Code	BT-AP03883
Host	Rabbit
Isotype	IgG
Size	20ul, 50ul, 100ul
Immunogen	Synthesized peptide derived from Hamartin . at AA range: 360-440
Mol wt	129767
Species reactivity	Human
Clonality	Polyclonal
Recommended application	WB, ELISA
Concentration	1 mg/ml
Full name	Hamartin Antibody
Synonyms	tuberous sclerosis 1

This product is for research use only, not for use in human, therapeutic or diagnostic procedure.

Background

TSC1 (tuberous sclerosis 1) encodes a growth inhibitory protein thought to play a role in the stabilization of tuberin. Mutations in TSC1 have been associated with tuberous sclerosis. Alternative splicing results in multiple transcript variants.

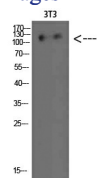
Recommended Dilution

WB: 1: 500 - 2000

ELISA: 1: 10000 - 20000

Not yet tested in other applications.

Images



Western Blot analysis of 3T3 cells using Hamartin Polyclonal Antibody diluted at 1:500. Secondary antibody was diluted at 1:20000

Storage

-20°C for one year

501 Changsheng S Rd, Nanhu Dist, Jiaxing, Zhejiang, China

Tel: 86 21 31007137 | E-mail: save@bt-laboratory.com | www.bt-laboratory.com