

Haptoglobin Polyclonal Antibody

Description

Product type	Primary Antibody
Code	BT-AP03889
Host	Rabbit
Isotype	IgG
Size	20ul, 50ul, 100ul
Immunogen	The antiserum was produced against synthesized peptide derived from human Haptoglobin. AA range:279-328
Mol wt	45205
Species reactivity	Human
Clonality	Polyclonal
Recommended application	IHC-p, ELISA
Concentration	1 mg/ml
Full name	Haptoglobin Antibody
Synonyms	HP; Haptoglobin; Zonulin

This product is for research use only, not for use in human, therapeutic or diagnostic procedure.

Background

HP encodes a preproprotein, which is processed to yield both alpha and beta chains, which subsequently combine as a tetramer to produce haptoglobin. Haptoglobin functions to bind free plasma hemoglobin, which allows degradative enzymes to gain access to the hemoglobin, while at the same time preventing loss of iron through the kidneys and protecting the kidneys from damage by hemoglobin. Mutations in this gene and/or its regulatory regions cause ahaptoglobinemia or hypohaptoglobinemia. This gene has also been linked to diabetic nephropathy, the incidence of coronary artery disease in type 1 diabetes, Crohn's disease, inflammatory disease behavior, primary sclerosing cholangitis, susceptibility to idiopathic Parkinson's disease, and a reduced incidence of Plasmodium falciparum malaria. The protein encoded also exhibits antimicrobial activity against bacteria. A similar duplicated gene is located next to this gene on chromosome 16. Multiple transcript variants encoding different isoforms have been found for this gene.

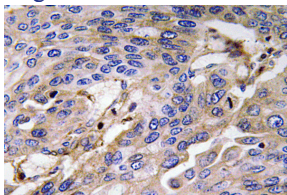
Recommended Dilution

IHC: 1: 100 - 1: 300

ELISA: 1: 40000

Not yet tested in other applications.

Images



Immunohistochemistry analysis of Haptoglobin antibody in paraffin-embedded human brain tissue.

Storage

-20°C for one year