

## NYX Rabbit Polyclonal Antibody

### Description

Product type	Primary Antibody
Code	BT-AP03898
Host	Rabbit
Isotype	IgG
Size	100ul, 50ul, 20ul
Immunogen	Synthesized peptide derived from human NYX
Mol wt	52910
Species reactivity	Human, Mouse
Clonality	Polyclonal
Recommended application	WB
Concentration	1 mg/ml
Full name	NYX
Synonyms	NYX

This product is for research use only, not for use in human, therapeutic or diagnostic procedure.

### Background

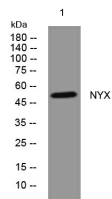
The product of this gene belongs to the small leucine-rich proteoglycan (SLRP) family of proteins. Defects in this gene are the cause of congenital stationary night blindness type 1 (CSNB1) also called X-linked congenital stationary night blindness (XLCSNB). CSNB1 is a rare inherited retinal disorder characterized by impaired scotopic vision| myopia| hyperopia| nystagmus and reduced visual acuity. The role of other SLRP proteins suggests that mutations in this gene disrupt developing retinal interconnections involving the ON-bipolar cells| leading to the visual losses seen in patients with complete CSNB.

### Recommended Dilution

WB: 1: 500 - 1: 2000

Not yet tested in other applications.

### Images



Western blot analysis of lysates from AD293 cells, primary antibody was diluted at 1:1000, 4°C overnight

### Storage

-20°C for 1 year