

hCAP-G2 Polyclonal Antibody

Description

Product type	Primary Antibody
Code	BT-AP03907
Host	Rabbit
Isotype	IgG
Size	20ul, 50ul, 100ul
Immunogen	The antiserum was produced against synthesized peptide derived from human NCAPG2. AA range:561-610
Mol wt	130960
Species reactivity	Human
Clonality	Polyclonal
Recommended application	IHC-p, ELISA
Concentration	1 mg/ml
Full name	hCAP-G2 Antibody
Synonyms	NCAPG2; LUZP5; Condensin-2 complex subunit G2; Chromosome-associated protein G2; CAP-G2; hCAP-G2; Leucine zipper protein 5; Non-SMC condensin II complex subunit G2

This product is for research use only, not for use in human, therapeutic or diagnostic procedure.

Background

NCAPG2 (non-SMC condensin II complex subunit G2) encodes a protein that belongs to the Condensin2nSMC family of proteins. The encoded protein is a regulatory subunit of the condensin II complex which, along with the condensin I complex, plays a role in chromosome assembly and segregation during mitosis. A similar protein in mouse is required for early development of the embryo. Alternate splicing results in multiple transcript variants.

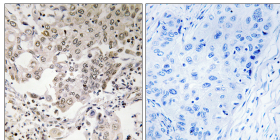
Recommended Dilution

IHC: 1: 100 - 1: 300

ELISA: 1: 40000

Not yet tested in other applications.

Images



Immunohistochemistry analysis of paraffin-embedded human lung carcinoma, using NCAPG2 Antibody. The picture on the right is blocked with the synthesized peptide.

Storage

-20°C for one year