

## hCAP-H Polyclonal Antibody

### Description

<b>Product type</b>	Primary Antibody
<b>Code</b>	BT-AP03908
<b>Host</b>	Rabbit
<b>Isotype</b>	IgG
<b>Size</b>	20ul, 50ul, 100ul
<b>Immunogen</b>	The antiserum was produced against synthesized peptide derived from human NCAPH. AA range:441-490
<b>Mol wt</b>	82563
<b>Species reactivity</b>	Human
<b>Clonality</b>	Polyclonal
<b>Recommended application</b>	WB, ELISA
<b>Concentration</b>	1 mg/ml
<b>Full name</b>	hCAP-H Antibody
<b>Synonyms</b>	NCAPH; BRRN; BRRN1; CAPH; KIAA0074; Condensin complex subunit 2; Barren homolog protein 1; Chromosome-associated protein H; hCAP-H; Non-SMC condensin I complex subunit H; XCAP-H homolog

**This product is for research use only, not for use in human, therapeutic or diagnostic procedure.**

### Background

NCAPH encodes a member of the barr gene family and a regulatory subunit of the condensin complex. This complex is required for the conversion of interphase chromatin into condensed chromosomes. The non-SMC condensin I complex subunit H encoded by NCAPH is associated with mitotic chromosomes, except during the early phase of chromosome condensation. During interphase, the protein has a distinct punctate nucleolar localization. Alternatively spliced transcript variants encoding different proteins have been described.

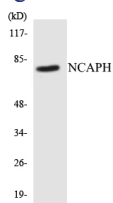
### Recommended Dilution

WB: 1: 500 - 1: 2000

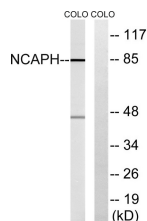
ELISA: 1: 40000

Not yet tested in other applications.

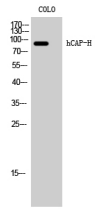
### Images



Western blot analysis of the lysates from COLO205 cells using NCAPH antibody.



Western blot analysis of lysates from COLO cells, using NCAPH Antibody. The lane on the right is blocked with the synthesized peptide.



## Western Blot analysis of COLO cells using hCAP-H Polyclonal Antibody

### Storage

-20°C for one year

501 Changsheng S Rd, Nanhu Dist, Jiaxing, Zhejiang, China

Tel: 86 21 31007137 | E-mail: [save@bt-laboratory.com](mailto:save@bt-laboratory.com) | [www.bt-laboratory.com](http://www.bt-laboratory.com)