

## HCCS Polyclonal Antibody

### Description

<b>Product type</b>	Primary Antibody
<b>Code</b>	BT-AP03911
<b>Host</b>	Rabbit
<b>Isotype</b>	IgG
<b>Size</b>	20ul, 50ul, 100ul
<b>Immunogen</b>	The antiserum was produced against synthesized peptide derived from human Cytochrome c-type Heme Lyase. AA range:81-130
<b>Mol wt</b>	30602
<b>Species reactivity</b>	Human, Mouse, Monkey
<b>Clonality</b>	Polyclonal
<b>Recommended application</b>	WB, IHC-p, IF, ELISA
<b>Concentration</b>	1 mg/ml
<b>Full name</b>	HCCS Antibody
<b>Synonyms</b>	HCCS; CCHL; Cytochrome c-type heme lyase; CCHL; Holocytochrome c-type synthase

**This product is for research use only, not for use in human, therapeutic or diagnostic procedure.**

### Background

Cytochrome c-type heme lyase encoded by HCCS is an enzyme that covalently links a heme group to the apoprotein of cytochrome c. Defects in HCCS are a cause of microphthalmia syndromic type 7 (MCOPS7). Three transcript variants encoding the same protein have been found for HCCS.

### Recommended Dilution

WB: 1: 500 - 1: 2000

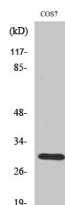
IHC: 1: 100 - 1: 300

IF: 1: 200 - 1: 1000

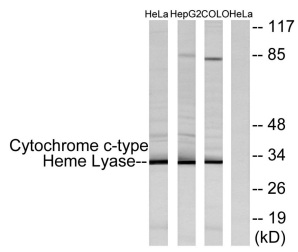
ELISA: 1: 20000

Not yet tested in other applications.

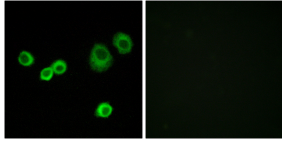
### Images



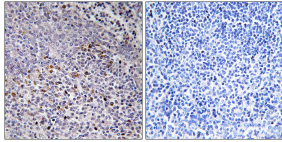
Western Blot analysis of various cells using HCCS Polyclonal Antibody diluted at 1:2000



Western blot analysis of lysates from HeLa, HepG2, and COLO cells, using Cytochrome c-type Heme Lyase Antibody. The lane on the right is blocked with the synthesized peptide.



Immunofluorescence analysis of MCF7 cells, using Cytochrome c-type Heme Lyase Antibody. The picture on the right is blocked with the synthesized peptide.



Immunohistochemistry analysis of paraffin-embedded human tonsil tissue, using Cytochrome c-type Heme Lyase Antibody. The picture on the right is blocked with the synthesized peptide.

### Storage

-20°C for one year

501 Changsheng S Rd, Nanhu Dist, Jiaxing, Zhejiang, China

Tel: 86 21 31007137 | E-mail: [save@bt-laboratory.com](mailto:save@bt-laboratory.com) | [www.bt-laboratory.com](http://www.bt-laboratory.com)