

HCN2 Polyclonal Antibody

Description

Product type	Primary Antibody
Code	BT-AP03916
Host	Rabbit
Isotype	IgG
Size	20ul, 50ul, 100ul
Immunogen	The antiserum was produced against synthesized peptide derived from human HCN2. AA range:491-540
Mol wt	96950
Species reactivity	Human, Mouse, Rat
Clonality	Polyclonal
Recommended application	WB, IHC-p, ELISA
Concentration	1 mg/ml
Full name	HCN2 Antibody
Synonyms	HCN2; BCNG2; Potassium/sodium hyperpolarization-activated cyclic nucleotide-gated channel 2; Brain cyclic nucleotide-gated channel 2; BCNG-2

This product is for research use only, not for use in human, therapeutic or diagnostic procedure.

Background

Hyperpolarization-activated cation channels of the HCN gene family, such as HCN2, contribute to spontaneous rhythmic activity in both heart and brain.

Recommended Dilution

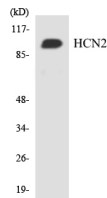
WB: 1: 500 - 1: 2000

IHC: 1: 100 - 1: 300

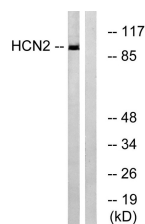
ELISA: 1: 40000

Not yet tested in other applications.

Images



Western blot analysis of the lysates from HT-29 cells using HCN2 antibody.



Western blot analysis of lysates from Jurkat cells, using HCN2 Antibody. The lane on the right is blocked with the synthesized peptide.

Storage

-20°C for one year

501 Changsheng S Rd, Nanhu Dist, Jiaxing, Zhejiang, China

Tel: 86 21 31007137 | E-mail: save@bt-laboratory.com | www.bt-laboratory.com